



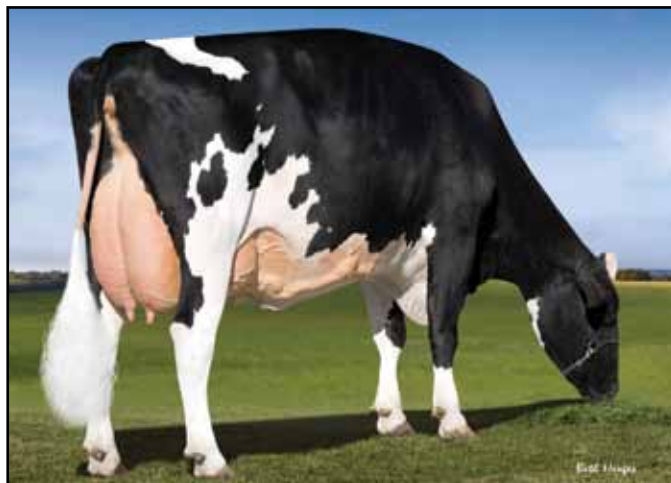
*Something for Everyone. . .
High Type, Elite Genomics, Show Heifers
& Embryos from the Best of the Best!*

**Best Western Plus
Dubuque, Iowa
May 5, 2017**



KHW REGIMENT APPLE-RED 3E-96
4-1 2x 365 35,750 4.7 1687 3.7 1314

Timeless. . . No matter what sire, what color, or what generation, the Apples transmit and make \$\$\$\$\$. We are thrilled to offer her high type dtrs by Brasch and Kenosha. Born in December, they have the cut and recognition for numerous marketing opportunities.



VAL-BISSON SHOTTLE IMELDA EX-94
6-08 2x 190 18,798 4.2 788 3.7 682 Inc

Dam of Doorman. Imelda sells open and ready to flush. A favorite among many, she is prolific donor and phenomenal transmitter. One of the easiest cows in the world to mate. Buy the foundation and watch it develop.



CO-VISTA ROBUST RILEY EX-90
2-1 305 27,530 3.9 1069 3.3 920

Her VG-86 Uno sells fresh and along with her 2816 GTPI Jedi born in July and ready to flush. This family has continuous spiked over PA and they like to make embryos!!! Next dam is Gold Invite Ex 94 Nom. All-Canadian followed by a VG 88 Shottle back to Dellia 2E95. Flush age and over 2800 and available doesn't happen very often.



SANDY-VALLEY ROBUST RUBY VG-87
2-4 2x 305 29,450 3.2 950 3.1 916

The dam of Rubicon and from Planet Sapphire, then all the way back to Dellia 2E95. This high production family hits again and again. Selling is her 909NM Delta Gr'dtr from an EX Uno. She sells bred and ready to IVF for her new owner.

Join us on Cinco de Mayo and then attend the Courtlane Celebration Sale on Saturday!



Tom Simon 563.599.9183
Rick Simon 563.744.3541
Mark Simon 563.542.1297
Bill Rauen 563.607.0694



Tim Rauen 563.451.5866
Amanda Hauck 570.765.0536
Mark Butz 319.350.1426
Kyle Demmer 563.451.5376

For catalogs, please email Kyle ~ kylerdemmer@gmail.com